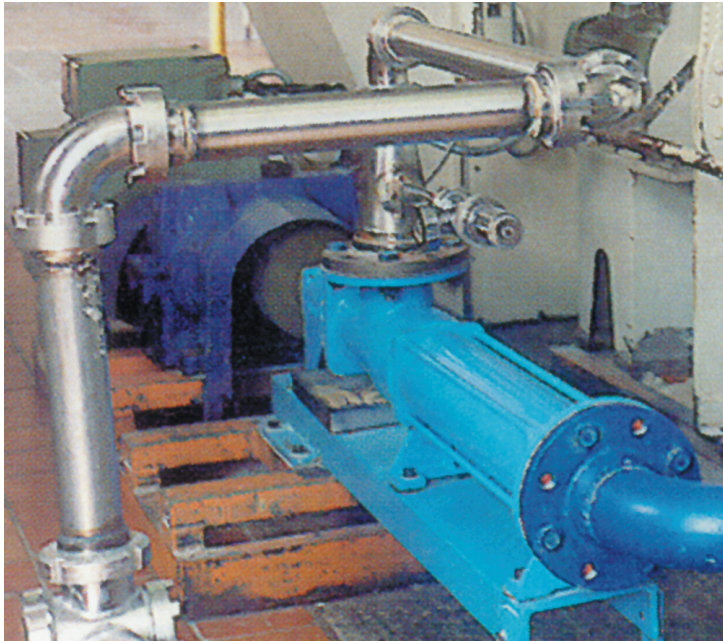


ProMinent Spectra Progressive Cavity Pumps Range S501 - S1063

ProMinent®



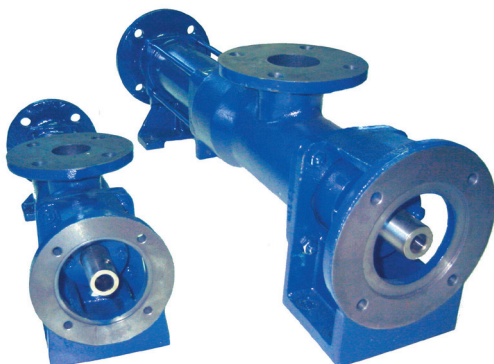
Spectra Pump Model: S601B03 used for the transportation of dough.

Advantages

- ✓ Standard pumps held in stock
- ✓ High quality, competitively priced pumps
- ✓ Competitively priced spares
- ✓ Base plate is optional
- ✓ Quick delivery
- ✓ Easily dismantled
- ✓ Sold as liquid end or complete pump
- ✓ B range of pumps flange directly to fixed and variable speed geared motors
- ✓ For more robust applications the S range suit standard flexible couplings.

Specifications

- Size Range:** S501 - S1063
Flow rates: up to 45 m³/h
Pressure: up to 24 bar
Applications: Sludges, polymer, caustic soda, PAC, milk, formaldehyde, alum, food products, etc.
Features: Casing - 316SS, 304SS, Cast Iron
Rotating components - 316SS, 304SS, tool steel, special materials
Elastomers - NBR, CSM, EPDM, Viton, etc.
Shaft Sealing: Gland packed or mechanical seal, with or without flushing



Spectra Pump Model: S501B01 used to transfer 3.6m³/h of powdered activated carbon at a water treatment facility.

ProMinent Fluid Controls Pty Ltd

Head Office: Unit 4, 4 Narabang Way
 BELROSE NSW 2085
 (PO Box 85, BELROSE WEST NSW 2085)
 Ph: (02) 9450 0995 Fx: (02) 9450 0996
 Email: sales@prominentfluid.com.au

QLD Office: 35/1048 Beaudesert Rd
 Coopers Plains QLD 4108
 Ph: (07) 3246 5200 Fx: (07) 3246 5225
 Email: pfcqld@prominentfluid.com.au

VIC Office: Unit 2, 88 Star Crescent
 HALLAM VIC 3803
 Ph: (03) 8795 7430 Fx: (03) 8795 7431
 Email: pfcvic@prominentfluid.com.au

Distributors Throughout Australia & New Zealand

Ref: Spectra S501-S1063 Brochure. - Last modified: 17-6-2002

Identity Code System for Spectra Progressive Cavity Pumps

ProMinent®

S - Identity Code- System for Spectra Progressive Cavity Pumps

S501 - S1063

	Close Coupled
B01	Standard - Cast iron casing
B02	Standard - 1.4308 casing
B03	Standard - 1.4571 casing
RB1	Hopper - Cast iron casin
RB2	Hopper - 1.4308 casing
RB3	Hopper - 1.4571 casing
LB1	Food Grade - 1.4571 casing

	Bare Shaft
S01	Standard - Cast iron casing
S02	Standard - 1.4308 casing
S03	Standard - 1.4751 casing
R01	Hopper - Cast iron casing
R02	Hopper - 1.4308 casing
R03	Hopper - 1.4571 casing
L01	Food Grade - 1.4571 casing

	Rotor
1	Tool steel hardened (1.2436)
2	Stainless steel (1.4057)
3	Stainless steel (1.4571)
4	Hastelloy
5	Stainless steel (1.4112 hardened)
6	Special material

	Rotor Finish
0	Standard
1	Hard chrome plated
2	Ductile coated
3	Undercut - Standard
4	Undercut - Hard chrome plated
5	Undercut - Ductile coated

	Rotating Parts
1	Stainless steel (1.4057)
2	Stainless steel (1.4571)
3	Hastelloy
4	Special material

	Stator
NB	NBR
EP	EPDM
CS	CSM
FP	FPM
SP	Special Material

	Joints
1	Cardan joint with collar
2	Cardan joint without collar

	Type of Seal
GP	Gland packing
GQ	Gland packing with quench
M1	Close coupled Mechanical Seal (Carbon - Cr - NBR)
M2	Close coupled Mechanical Seal (SiC - SiC - NBR)
M3	Close coupled Mechanical Seal (Carbon - Cr - FPM)
M4	Close coupled Mechanical Seal (SiC - SiC - FPM)
M5	Close coupled mechanical seal (SiC - SiC - EPDM)
M6	Bare shaft - Mechanical Seal (Carbon Cr - NBR)
M7	Bare shaft - Mechanical Seal (SiC - SiC - NBR)
M8	Bare shaft - Mechanical Seal (Carbon - Cr - FPM)
M9	Bare shaft - Mechanical Seal (SiC - SiC - FPM)
SS	Special sealing

Accessories

Baseplates	Block pump baseplate Bareshaft pump baseplate
Couplings	Coupling 6 / 12 bar Coupling 3 / 6 bar

S501 B01 1 3 2 CS 1 GP