

Effective chloramine reduction in pool water

UV system Dulcodes S with Powerline lamp

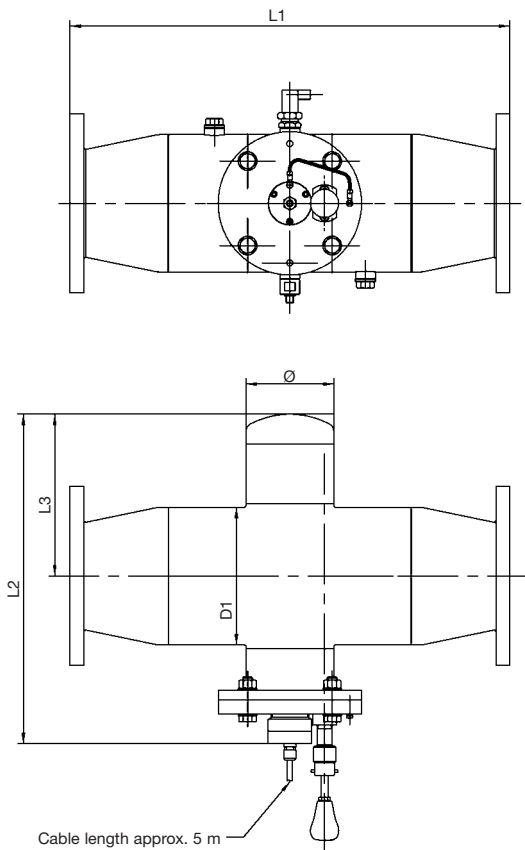


Dulcodes S UV systems are ideal for breaking down bound chlorine (chloramines) in swimming pool water. These odour-intensive substances (“chlorine odour”) irritate the eyes and mucous membranes. Special Powerline medium pressure lamps generate intensive UV radiation for the effective reduction of the chloramines.

In addition, chlorine-resistant germs in the water are reliably killed. The result is better and healthy water quality. The inline design ensures that the system is simple and easy to install in any position: quick retrofitting with minimal work, directly into a plastic pipeline without any stainless steel connection pieces required.

- Minimum space requirement due to extremely compact inline design
- Highest level of installation flexibility due to free choice of mounting orientation
- Unbeatably maintenance-friendly due to single-end lamp connection
- Quick payback due to operating cost savings in fresh water, chemicals and heating
- Additional disinfection barrier for chlorine-resistant germs
- High operating safety and simple diagnostics thanks to integrated screen recorder
- Manual or automatic wiper, also easy to retrofit
- Radiation chamber from high quality stainless steel 1.4571
- Power output control in steps 50, 75 and 100 %
- Monitoring of the system performance by UVC-selective sensor
- Monitoring of the water temperature
- Resource saving operation made possible through control which depends on the concentration of bound chlorine

Dulcodes S UV system



Dimensions table radiation chamber

	0.65 kW	1 kW	2 kW	3 kW	4-9 kW
D1	114.2	168.3	219.1	323.9	323.9
L1	500.0	700.0	700.0	800.0	900.0
L2	385.0	425.0	525.0	625.0	636.0
L3	142.0	208.0	258.0	308.0	318.6
Ø	88.9	139.7	139.7	139.7	273.0

Dimensions table control cabinet

H	380	500	600	600	1400
B	380	500	600	600	600
T	210	210	210	210	300

Technical Data

Typ	Max flow [m³/h] with 98%/cm transmission and UV-dose		Number of lamps and lamp power [kW]	Connector nom. dia. DIN 2576 selectable
	400 J/m²	600 J/m²		
1 x 0.65S*	26	17	1 x 0.65	DN 65 DN 80
1 x 1S**	77	51	1 x 1	DN 100 DN 125
1 x 2S	134	89	1 x 2	DN 125 DN 150
1 x 3S	266	177	1 x 3	DN 200 DN 250
2 x 2S	360	240	2 x 2	DN 200 DN 250
2 x 3S	495	330	2 x 3	DN 250
3 x 3S	750	500	3 x 3	DN 250 DN 300

* System without wiper and no power control

**System without power control

Maximum operating pressure 6 bar, guaranteed lamp life 8,000 h (pro rata)