

# ProMinent Spectra Progressive Cavity Pumps

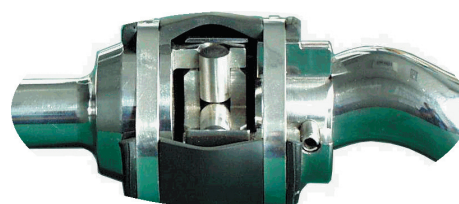
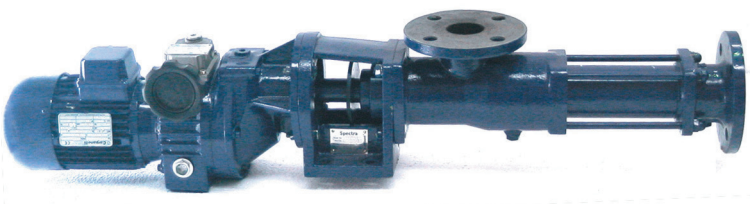
## Range S301 - S404

**ProMinent®**



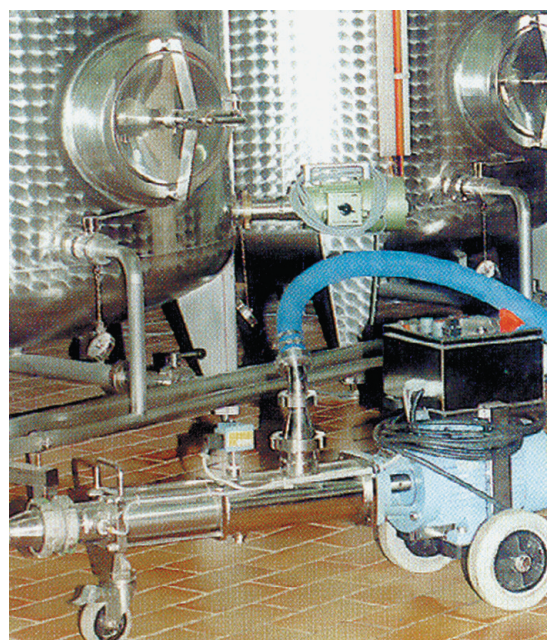
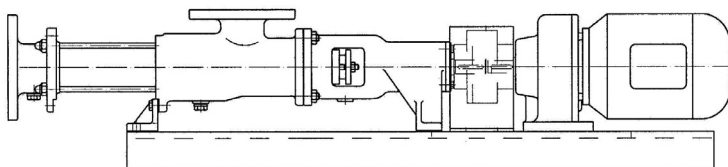
### Advantages

- ✓ Standard pumps held in stock
- ✓ High quality, competitively priced pumps
- ✓ Competitively priced spares
- ✓ Base plate is optional
- ✓ Quick delivery
- ✓ Easily dismantled
- ✓ Sold as liquid end or complete pump
- ✓ B range of pumps flange directly to fixed and variable speed geared motors
- ✓ For more robust applications the S range suit standard flexible couplings.



### Specifications

- Size Range:** S301 - S404
- Flow rates:** up to 7 m<sup>3</sup>/h
- Pressure:** up to 24 bar
- Applications:** Sludges, polymer, caustic soda, PAC, milk, formaldehyde, alum, food products, etc.
- Features:** Casing - 316SS, 304SS, Cast Iron  
Rotating components - 316SS, 304SS, tool steel, special materials  
Elastomers - NBR, CSM, EPDM, Viton, etc.
- Shaft Sealing:** Gland packed or mechanical seal, with or without flushing



### ProMinent Fluid Controls Pty Ltd

**Head Office:** Unit 4, 4 Narabang Way  
BELROSE NSW 2085  
(PO Box 85, BELROSE WEST NSW 2085)  
Ph: (02) 9450 0995 Fx: (02) 9450 0996  
Email: sales@prominentfluid.com.au

**QLD Office:** 35/1048 Beaudesert Rd  
COOPERS PLAINS, QLD 4108  
Ph: (07) 3246 5200 Fx: (07) 3846 5225  
Email: pfcqld@prominentfluid.com.au

**VIC Office:** Unit 2, 88 Star Crescent  
Hallam VIC 3803  
Ph: (03) 8795 7430 Fx: (03) 8795 7431  
Email: pfcvic@prominentfluid.com.au

**Distributors Throughout Australia & New Zealand**

# Identity Code System for Spectra Progressive Cavity Pumps

## S - Identity Code- System for Spectra Progressive Cavity Pumps

S301 - S404

### Close Coupled

B01	Standard - Cast iron casing
B02	Standard - 1.4308 casing
B03	Standard - 1.4571 casing
RB1	Hopper - Cast iron casin
RB2	Hopper - 1.4308 casing
RB3	Hopper - 1.4571 casing
LB1	Food Grade - 1.4571 casing

### Bare Shaft

S01	Standard - Cast iron casing
S02	Standard - 1.4308 casing
S03	Standard - 1.4751 casing
R01	Hopper - Cast iron casing
R02	Hopper - 1.4308 casing
R03	Hopper - 1.4571 casing
L01	Food Grade - 1.4571 casing

### Rotor

1	Tool steel hardened (1.2436)
2	Stainless steel (1.4057)
3	Stainless steel (1.4571)
4	Hastelloy
5	Stainless steel (1.4112 hardened)
6	Special material

### Rotor Finish

0	Standard
1	Hard chrome plated
2	Ductile coated
3	Undercut - Standard
4	Undercut - Hard chrome plated
5	Undercut - Ductile coated

### Rotating Parts

1	Stainless steel (1.4057)
2	Stainless steel (1.4571)
3	Hastelloy
4	Special material

### Stator

NB	NBR
EP	EPDM
CS	CSM
FP	FPM
SP	Special Material

### Joints

1	Cardan joint with collar
2	Cardan joint without collar

### Type of Seal

GP	Gland packing
GQ	Gland packing with quench
M1	Close coupled Mechanical Seal ( Carbon - Cr - NBR )
M2	Close coupled Mechanical Seal ( SiC - SiC - NBR )
M3	Close coupled Mechanical Seal ( Carbon - Cr - FPM )
M4	Close coupled Mechanical Seal ( SiC - SiC - FPM )
M5	Close coupled mechanical seal ( SiC - SiC - EPDM )
M6	Bare shaft - Mechanical Seal ( Carbon Cr - NBR )
M7	Bare shaft - Mechanical Seal ( SiC - SiC - NBR )
M8	Bare shaft - Mechanical Seal ( Carbon - Cr - FPM )
M9	Bare shaft - Mechanical Seal ( SiC - SiC - FPM )
SS	Special sealing

### Accessories

Baseplates	Block pump baseplate Bareshaft pump baseplate
Couplings	Coupling 6 / 12 bar Coupling 3 / 6 bar

S401 B01 1 3 2 CS 1 GP