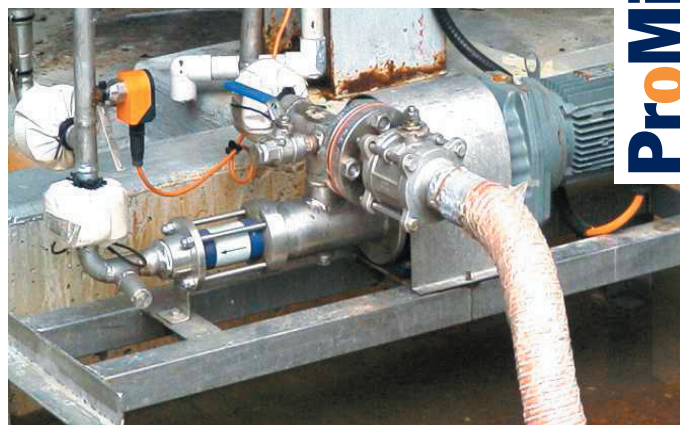


ProMinent® Spectra® Progressive Cavity Pumps Chemical Industry Applications

ProMinent®



Spectra helical rotor pump size S10B04 in RCH1000 construction with 1.4571 SS rotating parts and CSM stator for polymer metering

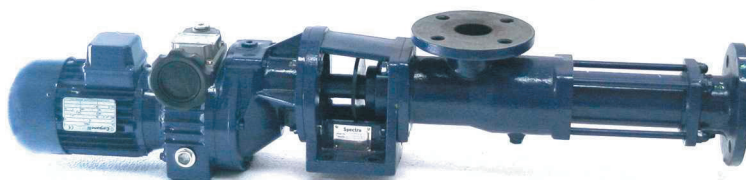


Spectra S201B03 metering Formaldehyde to a process stream near Sydney. Construction in 1.4571 SS for wetted parts.

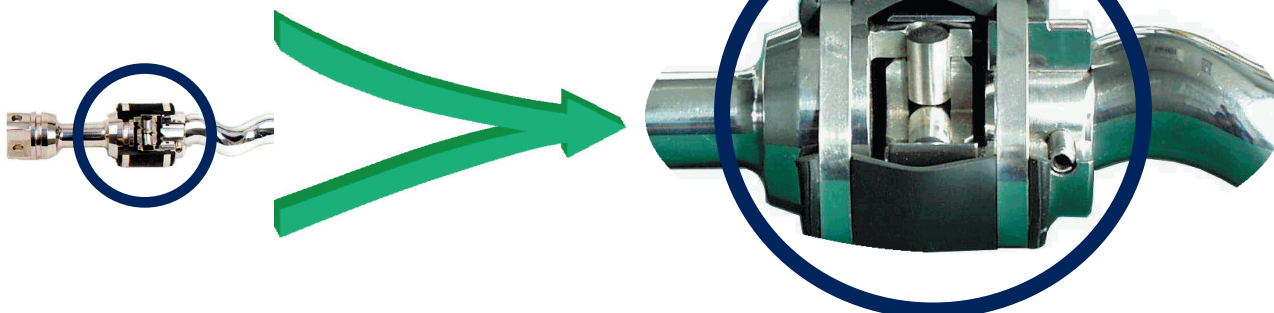
Spectra helical rotor pumps and their special features



- ✓ Capacities up to 450 m³/hr
- ✓ Pressures up to 48 bar
- ✓ Minimal pulsations
- ✓ Capacity proportional to speed
- ✓ Low operating noise
- ✓ Proven heavy duty cardan joints
- ✓ For metering and transfer applications
- ✓ Direction of flow reversible



The heart of the Spectra pump is the cardan joint



Head Office: Unit 4, 4 Narabang Way
BELROSE NSW 2085
(PO Box 85, BELROSE WEST NSW 2085)
Ph: (02) 9450 0995 Fx: (02) 9450 0996
Email: sales@prominentfluid.com.au

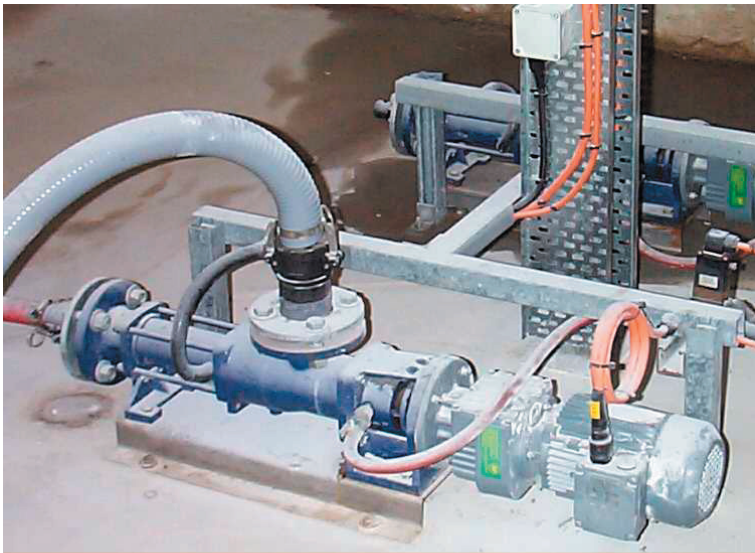
ProMinent Fluid Controls Pty Ltd

QLD Office: 1048 Beaudesert Rd
COOPERS PLAINS, QLD 4108
Ph: (07) 3246 5200 Fx: (07) 3846 5225
Email: pfcqld@prominentfluid.com.au

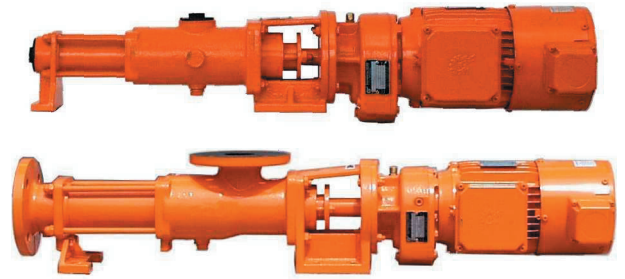
VIC Office: Unit 2, 88 Star Crescent
HALLAM VIC 3803
Ph: (03) 8795 7430 Fx: (03) 8795 7431
Email: pfcvic@prominentfluid.com.au

Distributors Throughout Australia & New Zealand

WA: Ph: NAPS (08) 9355 3666 Fx: (08) 9355 3000 **TAS:** Meacon Systems Ph: (03) 6244 7575 Fx: (03) 6244 757
NEW ZEALAND: Pump Engineers of New Zealand Ph: (64) 9571 3131 Fx: (64) 9571 2002



Lime slurry metering pump at a Waste Water treatment plant



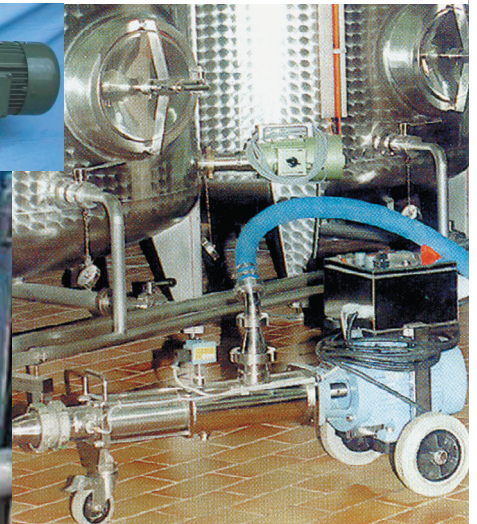
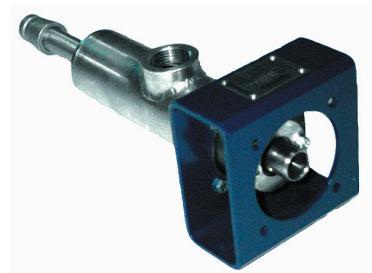
Two pumps prepared for fitting to a ProMinent polymer dosing packaged plant



Jacketed stainless steel pump for a Food industry application on glucose metering

Application areas:

- ✓ Flocculant metering - Polymer, Alum
- ✓ pH correction – Lime, caustic
- ✓ Water industry – PAC, Fluoride, polymer
- ✓ Sugar industry – molasses, cane juice etc
- ✓ Paper industry – adhesives, fillers, dyestuffs, pulps etc
- ✓ Mining – dewatering, slurry transfer, process metering, drilling mud
- ✓ General industrial – paint, wine, brewing,



Trolley mounted pump in a winery



Spectra helical rotor pumps transferring Sludge at a waste treatment facility

